

Mullard

PHOTO ELECTRIC CELL

3530

The 3530 Photo Electric Cell is of the gas-filled type with a Caesium Cathode.

OPERATING CHARACTERISTICS

Maximum Anode Voltage	$V_{a\max}$	=	100 volts
Normal Anode Voltage	V_{aw}	=	100 volts
Glow Voltage	V_s	=	140 volts
Maximum Anode Current	$I_{a\max}$	=	7.5 μA
Sensitivity		=	150 $\mu\text{A/Lm}$
Minimum Safety Resistance	$R_{l\min}$	=	0.1 megohm

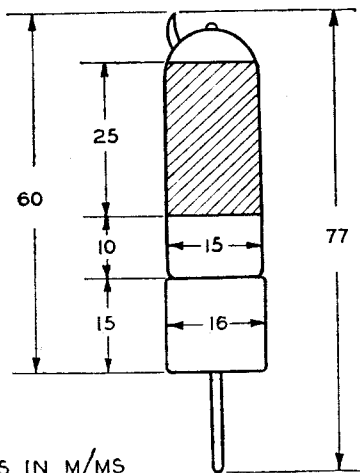
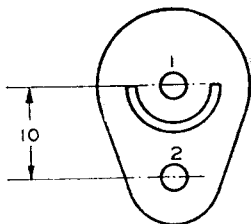
CAPACITY

Anode—Cathode	C_{ak}	=	5 μF
---------------	--------	----------	---	-----------------

CONNECTIONS

This cell is capped in a special 2-pin base.

PIN No. 1 ANODE
" 2 CATHODE



DIMENSIONS IN M/MS

3530

Mullard PHOTO ELECTRIC CELL

